

MUSEUM MEANDERINGS

A QUARTERLY REPORT OF THE LA CENTER MUSEUM ASSOCIATION



WINTER 2012 Website <http://www.thelacentermuseum.org> B.G. Barnhart, Editor

Directors & Officers

Dr. Barbara Barnhart
President

Baine Wilson-Micheletti
Vice President

Candi Irish
Secretary

Judy Hickman
Treasurer

Simone Auger, Director

Ed Brannfors, Director

Liz Cerveney, Director

Virginia van Breemen,
Director

Jan Wilson, Director

Tom Wooldridge,
Director

Mary Tannler Worley,
Director

Corporate Membership
J.S. Perrott & Co., Inc.
TDS Telecom

La.C. Museum Association
33920 NW Pacific Hwy.
La Center, WA 98629
(360) 263-3308
E-Mail BGBLaCentr@tds.net
L.C.M.A. is an IRS tax exempt

MARK YOUR CALENDARS NOW ~ UPCOMING EVENTS

LA CENTER HISTORICAL MUSEUM

February 4 - June 23: Local Native American Artifacts

April 7- Aug. 31: Grandma's Kitchen, Grandpa's Tools

May 19: ANNUAL ICE CREAM SOCIAL 2-4:00 p.m.

July 7 - Sept. 30: Cowley Pioneer Family at Paradise Point
(plus *The Cowley Family Gathering, July 4 - 7th*)

August 4 and 18: Walking Tours, 1:00p.m., and 3:00p.m.

AUGUST 24: "OUR DAYS" PARADE FLOAT

(Want to help with the float? Call Ken/Myrna 852-2136)

SEPTEMBER GALA & FUNDRAISER: To Be Announced

FLAT SAMANTHA VISITS LA CENTER HISTORICAL MUSEUM

Samantha, a third grader in Ms. Harmon's class at La Center Elementary, wrote a letter telling Dr. Barnhart that she found a big magic button on a walk one Saturday and so she pushed it and..."Bang! I didn't get hurt. But now I'm flat. So I'm called Flat Samantha." And, she is also so small that she can fit into the envelope in which she mailed herself to "Dr. B." Flat Samantha wanted to find out about the museum and what it does to help the community. Below are some photos of Flat Samantha's adventures during that visit.



FLAT SAMANTHA LEARNS ABOUT...

the Sternwheeler La Center, a Museum brochure, an L.C.M.A. pin, the 2012 calendar, a logger's cork boots.

LA CENTER HISTORICAL MUSEUM

410 WEST 5TH Street ~ La Center, WA 98629 ~ (360) 263-6609

Open: 1st & 3rd Saturdays of each month from Noon-4:00 p.m. ~ and by appointment

THE MUSEUM'S LATEST ACQUISITIONS

The La Center Historical Museum has recently acquired the **Walking Spinning Wheel** and the **Skein Winder** which are pictured at the right. These items belonged to Ira Eddy Spencer, a Civil War Veteran who was among the pioneers who homesteaded in Clark County in the 1870's. This spinning wheel is at least 120 years old and in excellent working condition. Plans during the next few months include spinning and carding demonstrations with these two items. Announcements will appear in the Clubs and Organizations Section of *The Reflector* and on the La Center Reader Board.

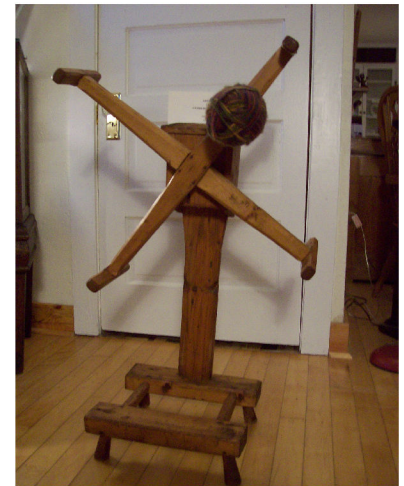
The earliest recorded illustrations of spinning wheels appeared in Baghdad in 1237), in China circa 1270 and in Europe circa 1280. The spinning wheel replaced hand spinning with a spindle -- a tapered rod or pin which would be spun to twist, wind and hold thread. In 14th century China, technical manuals reportedly describe a water powered spinning wheel.

The *great wheel* also known as the *walking wheel* or *wool wheel* was one of the earlier types of spinning wheel. It is usually used to spin wool and can only be used with fiber suited to long- draw spinning.

The lovely organ is a **W.W. Kimball Organ**, circa 1910. It is in perfect working order and came with the stool in front of it. All three items are from the Dorothy Person Estate and donated by family members through her nephew Tom Wooldridge.



Walking Spinning Wheel



Skein Winder

Do You Have Items to Donate to the Museum?

The La Center Historical Museum has printed Donation Forms for interested, potential donors to consider:

1.) Donation Form

- a) Part 1 - Unconditional Donation(s)
- b) Part 2 - Conditional Donation(s)

2.) Consignment Form

This form is used for temporary exhibits only.

Please call Dr. Barbara Barnhart (360) 263-3308

to discuss these forms or to obtain additional information.



W.W. Kimball Organ



HAT PINS AND HOLDERS

The Love of Collecting by Mary Tannler Worley

If you love Rhinestones, Art Nouveau, Cloisonné, semi precious stones, silver, brass and gold engraving, Carnival glass, Greek Revival, ivory, Baroque, Art Deco, Nippon, Limoges and so much more, the hat pin and hat pin holder collection at the La Center Museum is worth your visit. Hatpins are an affordable collector item that is both beautiful to look at, gorgeous to display and a part of history.

Hatpins in the collection at the La Center Museum date from approximately the 1890's to the middle 1920's, but can be found in history as far back as the Middle Ages, documented to hold the wimples and veils of the aristocratic women. Hatpins in the La Center Museum collection came from women in the mid 1800's, that were moving away from the traditional bonnet with the chin bow to straw hats. Fashion - and the flamboyant star, Lillian Russell - made for more elaborate hats that required longer hatpins and were of two classes. As you can see in the exhibit at LCMA, there are the common glass bead hatpins for everyday and working women hats that were traditionally sold on cards. Then there are the more extravagant pins in the collection which were usually longer and very ornate.



Ladies vanity collections of this era included a hairbrush, mirror, hat pin holder and a hair receiver. Women collected their own hair in the receiver to make a pompadour to support these large hats fastened in place by the long hatpins. Pompadour frames were also purchased but the sheer volume meant that hats needed great support so hatpins became longer and longer. Hatpins were an essential part of women's fashion.

They were considered jewelry and were a more appropriate gift for a gentleman to give to a lady than necklaces, bracelets or earrings. Jewelers that designed these magnificent pins included Charles Horner and Louis Tiffany and were presented in velvet lined boxes to the intended.

Coincidentally, the Women Suffragettes in the early 1900's were becoming a movement in Europe and the United States. It became obvious that a 12" hatpin could be lethal. Laws were passed that limited the "legal" size to 9 inches!

World War I and material shortages put an end to such frivolous hats and the need for hat pins as materials for both were needed to fight the War. Hatpins evolved from ornate, long pieces of art to military badges to non-existent.

Most hatpins are unmarked. Research on the collection at the La Center Museum provides clues to the manufacturers but no concrete information due to the lack of true marking.

Collecting is a fun and interesting way to keep history alive. Hatpin collecting is interesting in that there was a definite beginning and end of manufacturing and a wide variety of styles.

We invite your stories and interest in this and other collections. Please call us or e-mail at: lacentermuseum@tds.com



Collection of Virginia DeLong Tannler

MEMBERSHIP CORNER

Thank you to those of you who have renewed your Museum membership for 2012. Your support of our volunteer based La Center Historical Museum is very much appreciated.

To those of you who wish to join the Museum, there are individual, family, business and corporate memberships to choose from. To become a member or to renew a membership, we now have Pay Pal and credit card options available at www.thelacentermuseum.org or you may use the form at the bottom of this page. Admission is free. All ages are welcome!
~ Ed Brannfors, Membership Chair

...AND THANK YOU SO VERY MUCH
to all the Volunteers who work on the
First and Third Saturdays of each month
from Noon~4:00 p.m.
at the

La Center Historical Museum.

**If you would like to serve as a Volunteer please
contact Candi Irish at 921-5021 (cell).**

Le Centre: The spelling of our city's name varied in its early years. The French spelling is attributed to the French fur trappers who ran trap lines along numerous creeks that flow into the East Fork.

It was the center of their activities

THANK YOU TO OUR BENEFACTORS

Tom Wooldridge ~ \$30

In Memory of Dorothy Person

Tom Wooldridge ~ \$150

Proceeds from the auction of a
Walking Stick and the sale of a Cane

Virginia van Breemen ~ \$40

Christmas Donation

TDS Telecom ~ \$700

Installation of a Direct Service Line and
and Office Equipment Grant



Native American Exhibit: 21' Chinook Canoe

LA CENTER MUSEUM ASSOCIATION MEMBERSHIP FORM

Please check type of membership:

☐ Individual (\$25) ☐ Family (\$35) ☐ Organization (\$25)
☐ Business (\$35) ☐ Corporate (\$500)

Name

Address

City, State, Zip

E-mail Address

Make checks payable to: La Center Museum Association

Mail to: 33920 NW Pacific Hwy., La Center, WA 98629 ~ *Thank you!*

