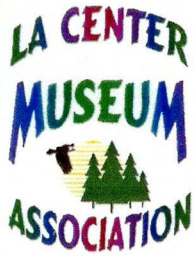


MUSEUM MEANDERINGS

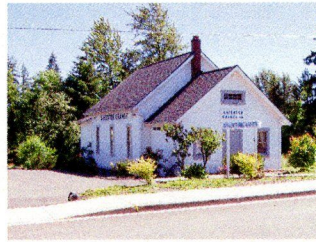
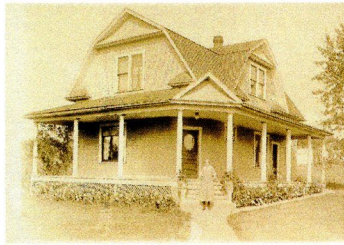
A QUARTERLY REPORT OF THE LA CENTER MUSEUM ASSOCIATION



June 2010 Website <http://www.lacentermuseum.com> B.G. Barnhart, Editor

La Center Historical Museum Is A Reality

The La Center Museum Association is pleased to announce that the La Center Historical Museum will open this summer at 410 West 5th Street. The Colf Family who purchased the property and completed renovations last year generously offered a benevolent rental agreement to the L.C.M.A. Board of Directors. The wheels were set in motion with the City of La Center to change the site from residential to professional use and the City Council approved that change this month. West 5th Street -- with the Fanning House, the Grange Hall and the Historical Museum -- has become La Center's "Gateway to History."



Directors and Officers

Dr. Barbara Barnhart
President

Candy Falk
Vice President

Candi Irish
Secretary

Judy Hickman
Treasurer

Jay Cerveney

Janice Fillman

Margaret Colf Hepola

Claudia Long

Virginia van Breemen

Myrna Viles

Baine Wilson-Micheletti

Corporate Membership

TDS Telecom

J.S. Perrott & Co. Inc.

Mailing Address

L.C. Museum Association
33920 NW Pacific Hwy.

La Center, WA 98629

Telephone: (360) 263-3308

L.C.M.A. is an IRS tax exempt

501(c) (3) Public Charity

Current plans include opening in the latter part of July with an Open House and two permanent galleries featuring **The Sternwheeler Era** and **The Loggers** who cut railroad ties and cordwood in the numerous sawmills that dotted the area's hillsides. Other displays will include household items and furnishings representative of the late 1880's through the 1920's. In August and September there will be a Military Display that will focus on local area Veterans of the Civil War, World War I and World War II. It will complement the American Veterans Travelling Tribute which will be hosted at the Community Center from August 4th through 8th. Watch your e-mail and postal deliveries for announcements of the La Center Historical Museum's Open House and other events.

MILITARY ITEMS ARE NEEDED FOR MUSEUM DISPLAYS

If you have some uniforms, medals, memorabilia or old photos from World War I or World War II to donate or lend for the museum's military exhibit please call Barbara at (360) 263-3308. We are also seeking information about John A. Moore, a retired Civil War Veteran, who resided in the area in the late 1890's. *The Vancouver Independent* (January 19, 1899) reported that he was "...granted a pension of six dollars a month with back pension to 1895. John is an upright citizen and deserves the reward he has received." (Source: Vancouver Area Chronology)

La Center Museum Association's

Mark
Your
Calendar Now.



Call
For A
Reservation

STAR SPANGLED

Dinner and Auction Fundraiser

Saturday, September 25th, 2010 ~ 5:30 p.m.

- * *Dine in a beautiful Clark County barn.*
- * *Support La Center Historical Museum with your silent and live auction bids.*
- * *No host bar during silent auction.*
- * *Buffet Dinner with complimentary wine.*
- * *Entertainment: Lewis River Dixie Band*

\$35 per person - 100% tax deductible

For information or reservations call:

Barbara Barnhart ~ (360) 263-3308

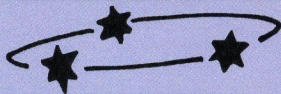
Judy Hickman ~ (360) 263- 9060

THANK YOU TO OUR BENEFACTORS

Gladys Giberson ~ \$100

Dick Siegel ~ Ice Cream

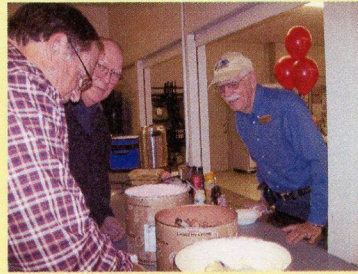
Don & Barbara Barhhart ~ Balloons,
Ice Cream Toppings and Raffle Item



Historical Tidbit

The city of La Center had various names including "Lewis River" and "Timmens Landing." When the Post Office was established near the dock in the early 1870's the name La Center was preferred by the town's leaders who felt that it might one day become the center of river commerce. John Timmen platted the land and owned a great deal the property on the north shore of the East Fork. John Pollack owned the property on the south shore of the river.

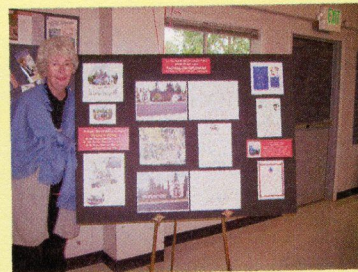
Third Annual Ice Cream Social - May 24th



Noel Johnson places a special order as Mayor Jim Irish and Murray Falk scoop ice cream. Noel won the raffle item -- a framed photo of two sternwheelers -- the Mascot and Gov. Newell.



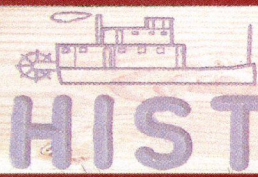
Newly appointed L.C.M.A. Board Member Baine Wilson-Micheletti arranges cookies baked by members. Baine is a 6th generation "La Centerite" whose family roots are in the logging industry.



Janice Fillman is standing by the poster display which highlights upcoming events and photos of La Center Historical Museum.



Dockside at La Center circa mid-1890's
A barge awaiting railroad ties, two Sternwheelers
-- The Governor Newell & The Mascot



LACENTER HISTORICAL MUSEUM



Thank you to Ken Viles who designed the sign above. It is 1 x 6 feet and will be a freestanding sign next to the gravel driveway at the La Center Historical Museum at 410 West 5th Street. We will be submitting the design to the City for approval. Yes, the sternwheelers are the "La Center" which was owned by Pete Moe and Uriah Brothers. It navigated the Lewis River from 1912-1931.

UPCOMING EVENTS

Mon. July 12 ~ Board of Directors Meeting
Grange Hall - 6:30 p.m.

Friday July 23 and Saturday July 24
~ Invitational Open House Receptions
at La Center Historical Museum
5:30 - 7:30 p.m.

Saturday, July 31~ Grand Opening
La Center Historical Museum
Open to the Public ~12-4:00 p.m.

Thursday, Friday Saturday Aug. 5-7
"Salute to Veterans of the Civil War,
World War I and World War II "
12 Noon - 4:00 p.m.

Saturday August 14 and 28 ~ 12-4p.m.
"Salute to Veterans..." Exhibit Continues

VOLUNTEER HELP WANTED!

As you know, there are no paid staff members in the La Center Museum Association. We are all volunteers. Your help, talent and expertise in preparing exhibits, keeping and gathering records, greeting visitors and helping with chores would be most appreciated. The first few months we are open we will concentrate our efforts on staffing the events that are scheduled. If you can help out for a two or four hour shift on one or more of the dates listed opposite, please call Barbara at 263-3308 ASAP!

MEMBERSHIP DUES REMINDER

If you have not yet renewed your membership in the L.C.M.A. please consider doing so now or consider making a donation to help with operating expenses.

LA CENTER MUSEUM ASSOCIATION MEMBERSHIP FORM

Please check type of membership: ☐ Individual \$25 ☐ Family \$35 ☐ Organization \$25
☐ Business \$35 ☐ Corporate \$500 ☐ Other (donation) \$ _____

Name _____ Telephone _____

Address _____

City, State, Zip _____

E-Mail _____

**Thank
You!**

Make checks payable to La Center Museum Association
Mail to: 33920 NW Pacific Hwy., La Center, WA 98629

**Thank
You!**